

Wood Liner & Components

Section 300

Wood Liner & Components

Page Number	Vendor	Product	Sold Regionally	Publish Date
300	Z-Flex	Heavy Flex Liner & Fittings		05/25
301-302	Z-Flex	Flex Stainless Steel Flex Kits		05/25
303-306	Reliance	Masonry Liner Accessories		08/21
307	Durablanket (Unifrax)	Liner Insulation		05/24
308	Reliance	Insert to Liner Adapters		08/21
309	Reliance	Zero-Zero Masonry Liner System		08/21
310	M & G Dura-Vent	6" & 8" DuraLiner		05/25

PLEASE NOTE: Not all products are sold throughout all AES territories/regions. If "Sold Regionally" please contact AES Inside Sales for availability 800-682-9722

Or by visiting...



AMERICAN
HEARTH PRODUCTS
Reliance Liner

Z-FLEX
CHIMNEY & VENTING SOLUTIONS

DuraVent
Member of M&G Group

For same day shipping, place order by: 1pm (CO), 2pm (CA, WA) and 11am (MN, TX). Give us a call at 1-800-682-9722

Associated Energy Systems - Serving you with distribution centers in: Kent, WA | West Sacramento, CA | Denver, CO | Dallas, TX | Rogers, MN

Stock: Y = Stock, N or * = Non-Stock, LTSD = Limited to Stock on Hand

Non-Stock Item Notice: Items marked non-stock must be ordered in case quantities

2025-2026

Wood Liner & Components

Stainless Steel Heavy Flex Liner & Fittings



Heavy Flex Stainless Steel Chimney Liner

Made of .019 thick 304L stainless steel. 4 ply, continuous metal, fully interlocked, strip-wound construction provides extra strength and durability for demanding installations where the liner may be pulled and stressed more than normal. 25' rolls cannot ship via U.P.S.

Item No.	Description	Retail	Stocked
ZFMHLXX0525	(ZFLAF525) 5" x 25' Roll Stainless Steel Flex Liner	\$1,435.00	N
ZF2ZMHLXX0625	(ZFLAF625) 6" x 25' Roll Stainless Steel Flex Liner	1,412.00	Y
ZF2ZMHLOX0625	(ZFLAF625OV) 6" x 25' Roll Oval Stainless Steel Flex Liner	1,762.00	N
ZF2ZMHLXX0725	(ZFLAF725) 7" x 25' Roll Stainless Steel Flex Liner	1,857.00	Y
ZF2ZMHLXX0825	(ZFLAF825) 8" x 25' Roll Stainless Steel Flex Liner	1,939.00	Y
ZF2ZMHLXX0605	(ZFLAF65) 6" x 5' Stainless Steel Flex Liner	299.00	Y
ZF2ZMHLXX0705	(ZFLAF75) 7" x 5' Stainless Steel Flex Liner	377.00	Y
ZF2ZMHLXX0805	(ZFLAF85) 8" x 5' Stainless Steel Flex Liner	393.00	Y



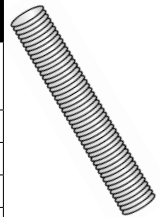
Flex Liner

Oval Heavy Flex Stainless Steel Chimney Liner

.019 thickness, 304L stainless steel. Ovalizing is available on other sizes of flex liner - please call AES Inside Sales for more information.

ZF2ZMHLOX0605	(ZFLAF65OV) 6" x 5' Stainless Steel Flex Liner	\$347.00	Y
ZF2ZMHLOX0705	(ZFLAF75OV) 7" x 5' Stainless Steel Flex Liner	399.00	N
ZF2ZMHLOX0805	(ZFLAF85OV) 8" x 5' Stainless Steel Flex Liner	441.00	N

Available in W. Sacramento CA only. Features 1-foot of round flex and 4-feet of oval flex. 4-1/2" on oval.



Corrugated Flex Liner

Oval-Round Flex Fittings

304 stainless steel. For converting oval flex lining into round rigid liner.

RM6ORT	6" Top, Oval Side Crimped	\$75.00	Y
RM6ORB	6" Bottom, Round Side Crimped	75.00	Y



Oval Flex Liner

RM8ORT	8" Top, Oval Side Crimped	128.00	Y
RM8ORB	8" Bottom, Round Side Crimped	128.00	Y

Nose Cones

24-gauge, 304 stainless steel. Recommended for use with Hi-Per-Flex liners. Assists with installation of difficult relines with offsets or other obstructions. Simply tie a rope onto the loop and attach the vent to the nose cone. Liner pulls down easily for placement in the chimney.

RM3NC	3" Nose Cone	\$47.00	Y
RM6NC	6" Nose Cone	47.00	Y
RM8NC	8" Nose Cone	47.00	N



Oval-Round Flex Fitting

Heavy Flex Offsets

ZF2ZOA1506	(ZFELHF615) 6"x15 Degree Heavy Flex Offset	\$104.00	Y
ZF2ZOA3006	(ZFELHF630) 6"x30 Degree Heavy Flex Offset	104.00	Y
ZF2ZOA4506	(ZFELHF645) 6"x45 Degree Heavy Flex Offset	88.00	Y



Nose Cone

For same day shipping, place order by: 1pm (CO), 2pm (CA, WA) and 11am (MN, TX). Give us a call at 1-800-682-9722

Stock: Y = Stock, N or * = Non-Stock, LTSD = Limited to Stock on Hand

Non-Stock Item Notice: Items marked non-stock must be ordered in case quantities

Wood Liner & Components

Z-Flex

316Ti Stainless Steel Liner



Z-Flex 316Ti Stainless Steel liners

Kits contain the specified length of corrugated stainless steel flex liner, an 18" x 18" flat plate, appliance connector and quick cap. Except, there are NO appliance connectors in the oval kits.

Item No.	Description	Wt.	Retail	Stocked
ZF2ZLSSXX0525	(ZF525LSN) 5" x 25' Stainless Steel Flex Liner Only		\$645.00	N
ZF2INSERTK615	(ZF615KSA) 6" x 15' Stainless Steel Flex Liner Installation Kit	21 lbs.	692.00	Y
ZF2INSERTK620	(ZF620KSA) 6" x 20' Stainless Steel Flex Liner Installation Kit	24 lbs.	790.00	Y
ZF2INSERTK625	(ZF625KSA) 6" x 25' Stainless Steel Flex Liner Installation Kit	27 lbs.	866.00	Y
ZF2INSERTK635	(ZF635KSA) 6" x 35' Stainless Steel Flex Liner Installation Kit	38 lbs.	1,146.00	Y
ZF2ZFSFIKITCA-0625PI	(Sold in CA Only) 6" x25' Pre-Insulated Solid Fuel Insert Kit includes Flex, 18x18 Flat Plate, CA Cap and Appliance Flex Connector		2,194.00	Y
ZF2ZFSFIKITCA-0635PI	(Sold in CA Only) 6" x35' Pre-Insulated Solid Fuel Insert Kit includes Flex, 18x18 Flat top Plate, CA Cap and Appliance Flex Connector		2,870.00	N
ZF2OVKT0620	(ZF620KSA-O) 6" x 20' OVAL SS Flex Liner Installation Kit (Appliance connector is not included.)	24 lbs.	898.00	Y
ZF2OVKT0625	(ZF625KSA-O) 6" x 25' OVAL SS Flex Liner Installation Kit (Appliance connector is not included.)	27 lbs.	974.00	Y
ZF2ZLSSXX0625	(ZF625LSN) 6" x 25' Stainless Steel Flex Liner Only (Cannot be ovalized)	19 lbs.	671.00	Y
ZF2ZLSSXX0635	(ZF635LSN) 6" x 35' Stainless Steel Flex Liner Only (Cannot be ovalized)		919.00	Y
ZF2ZLSSXX0675	(ZF675LSN) 6" x 75' Stainless Steel Flex Liner Only		2,359.00	N
ZF2INSERTK725	(ZF725KSA) 7" x 25' Stainless Steel Flex Liner Installation Kit	35 lbs.	1,195.00	N
ZF2INSERTK820	(ZF820KSA) 8" X 20' Stainless Steel Flex Liner Installation Kit		1,092.00	N
ZF2INSERTK825	(ZF825KSA) 8" x 25' Stainless Steel Flex Liner Installation Kit	35 lbs.	1,294.00	Y
ZF2ZLSSXX0825	(ZF825LSN) 8" x 25' Stainless Steel Flex Liner Only (Cannot be ovalized)		959.00	N
ZF2OILKTX625KIT	(ZFFSCKIT0625) *6" x 25' Smoothcore 316Ti Flex kit (Includes 316Ti SS Smoothcore Liner, Cap, 18 x 18 Flat Top Plate & Appliance Connector)		1,721.00	N

For same day shipping, place order by: 1pm (CO), 2pm (CA, WA) and 11am (MN, TX). Give us a call at 1-800-682-9722

Stock: Y = Stock, N or * = Non-Stock, LTSD = Limited to Stock on Hand

Non-Stock Item Notice: Items marked non-stock must be ordered in case quantities

Wood Liner & Components

Z-Flex

316Ti Stainless Steel Liner



Stainless Liner Accessories

Item No.	Description	Wt.	Retail	Stocked
ZFSCSXX04	(ZFTPLF41616) 4" 16" x 16" Flat Top Plate		\$82.00	Y
ZF2ZSCS1306	(ZFTPLF61313) 6" Flat Top Plate, 13" x 13"		82.00	Y
ZF2ZSCS1806	(ZFTPLF61818) 6" Flat Top Plate, 18" x 18"		98.00	Y
ZF2AFCS04	(ZFTPNS41313) 4" 13" x 13" No Sag Top Plate		84.00	Y
ZF2AFCX04	(ZFTPNS41818) 4" 18" x 18" No Sag Top Plate		104.00	Y
ZF2AFCS06	(ZFTPNS61313) 6" 13" x 13" No Sag Top Plate		71.00	Y
ZF2AFCX06	(ZFTPNS61818) 6" Top Plate, 18" x 18"		104.00	Y
ZF2AFCX08	(ZFTPNS81818) 8" Top Plate, 18" x 18"		389.00	Y
ZF2ZMRCS06	(ZFCSLF6) 6" Quick Cap with Screen		111.00	Y
ZF2ZMRN06	(ZFCNSLF6) 6" Flex Cap w/NO Screen		409.00	Y
ZF2ZMRCS08	(ZFCSLF8) 8" Quick Cap w/Screen - SPECIAL ORDER ONLY		430.00	Y
ZFCNSLF8	8" Flex Cap w/NO Screen		116.00	Y
ZF2CNNI06	(ZFACLF6) 6" Quick Appliance Connector		54.00	Y
ZF2CNNI08	(ZFACLF8) 8" Quick Appliance Connector		90.00	Y
ZF2CNNTRC06	(ZFQCLF6) 6" Quick Flex Connector		54.00	Y
ZF2CNNTRC07	(ZFQCLF7) 7" Quick Connector w/2 Bands -		84.00	Y
ZF2CNNTRC08	(ZFQCLF8) 8" Quick Connector w/2 Bands		89.00	Y
RM6ADJ	6" S/S Flat Adj. Insert/Liner Adapter, Adjustment Spec's 0"- 6" (2" x 12" x 14")		191.00	Y
ZF2ZFTCB06	(ZF2ZFTCB06) 6" Tee w/Cap & 10" Branch		181.00	Y
RM8ADJ	8" Adjustable Offset Adapter		231.00	Y
ZF2ZRROAX06	(ZFORF66) *6" Round Stove Adapter to 6" Oval Female		122.00	N
ZF2ZOAI3006	(ZF630ADAPTER) 6" X 30 Degree Offset Insert Adapter - Low Profile w/ Grab Handle		88.00	N

For same day shipping, place order by: 1pm (CO), 2pm (CA, WA) and 11am (MN, TX). Give us a call at 1-800-682-9722

Stock: Y = Stock, N or * = Non-Stock, LTSD = Limited to Stock on Hand

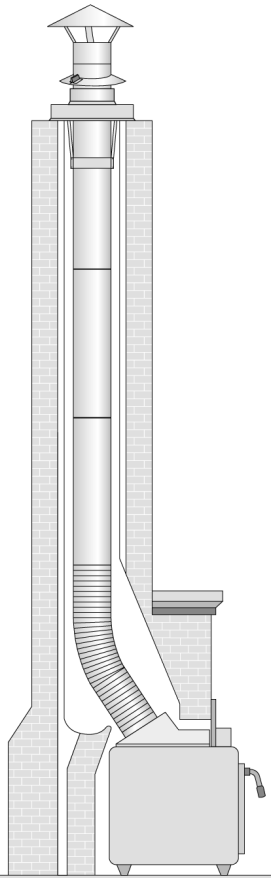




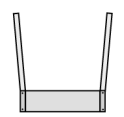
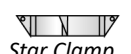

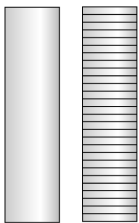

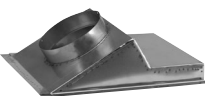

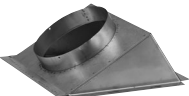

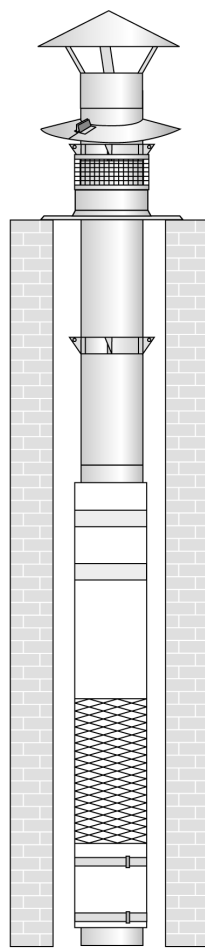
Non-Stock Item Notice: Items marked non-stock must be ordered in case quantities

Wood Liner & Components

Liner Accessories Masonry Liner Systems

AMERICAN
HEARTH PRODUCTS
Reliance Liner

2
0
2
5
-
2
0
2
6

<p>Standard Masonry Liner System</p> <p><i>Recommended for existing chimneys that are lined with material such as clay tile.</i></p>  <p><i>Wood Insert Liner Application</i></p>	<p>Termination Cap Options</p> <div style="display: flex; justify-content: space-around;">   </div> <div style="display: flex; justify-content: space-around;"> <p><i>Wind Directional Cap</i></p> <p><i>Weatherband Cap</i></p> </div> <p>System Components</p> <div style="display: flex; flex-wrap: wrap; justify-content: space-around;"> <div style="text-align: center;">  <p><i>Storm Collar</i></p> </div> <div style="text-align: center;">  <p><i>Zero-Zero Storm Collar</i></p> </div> <div style="text-align: center;">  <p><i>Clamp Hanger</i></p> </div> <div style="text-align: center;">  <p><i>Star Clamp</i></p> </div> <div style="text-align: center;">  <p><i>Tile Cap or Flat Plate</i></p> </div> <div style="text-align: center;">  <p><i>Rigid and Flex Liner</i></p> </div> <div style="text-align: center;">  <p><i>Zero-Zero Air Basket</i></p> </div> </div> <p>Insert to Liner Adapter Options</p> <div style="display: flex; justify-content: space-around;">    </div> <div style="display: flex; justify-content: space-around;"> <p><i>Slide Damper</i></p> <p><i>Set-Back</i></p> <p><i>Universal</i></p> </div> <div style="text-align: center;">  <p><i>Adjustable Flat Offset</i></p> </div>	<p>Zero-Zero Masonry Liner System</p> <p><i>Recommended for unlined masonry chimneys or where clearances are of concern.</i></p>  <p><i>Zero-Zero Application</i></p>
--	--	--

For same day shipping, place order by: 1pm (CO), 2pm (CA, WA) and 11am (MN, TX). Give us a call at 1-800-682-9722

Stock: Y = Stock, N or * = Non-Stock, LTSD = Limited to Stock on Hand

Non-Stock Item Notice: Items marked non-stock must be ordered in case quantities

Wood Liner & Components

Liner Accessories

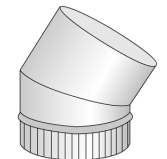
Stainless Steel Flex Liner & Parts



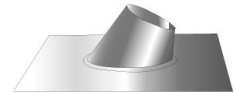
Mud-in Thimbles				
For passing liner through masonry.				
Item No.	Description		Retail	Stocked
RM6MUD	6" Thimble		\$22.00	Y
RM8MUD	8" Thimble		24.00	N
Flex Offset Adapter with Flex Coupler				
ZF2ZOA1506	(ZFELHF615) 6" x 15° Offset		\$104.00	Y
ZF2ZOA3006	(ZFELHF630) 6" x 30° Offset		104.00	Y
ZF2ZOA4506	(ZFELHF645) 6" x 45° Offset		88.00	Y
RM715FC	7" x 15° Offset		43.00	N
RM730FC	7" x 30° Offset		43.00	Y
RM745FC	7" x 45° Offset		43.00	N
Flex Couplers or Adapters				
To join flexible lining material to rigid liner.				
RM5FC	5" Flex Coupler		\$33.00	Y
RM6FC	6" Flex Coupler		39.00	Y
RM8FC	8" Flex Coupler		43.00	Y
Stainless Steel Flashings for ICC				
30" x 30" base. Designed to fit ICC Chimney or others with the same O.D. dimensions.				
RM6FA	6" Flashing for 8" O.D.	1/12 to 7/12	\$146.00	Y
RM6FB	6" Flashing for 8" O.D.	8/12 to 12/12	146.00	Y
RM10FA	10" Flashing for 12" O.D.	1/12 to 7/12	129.00	N
RM10FB	10" Flashing for 12" O.D.	8/12 to 12/12	152.00	N



Mud-In Thimble



30° Elbow



Flashing

For same day shipping, place order by: 1pm (CO), 2pm (CA, WA) and 11am (MN, TX). Give us a call at 1-800-682-9722

Stock: Y = Stock, N or * = Non-Stock, LTSD = Limited to Stock on Hand

Non-Stock Item Notice: Items marked non-stock must be ordered in case quantities

Wood Liner & Components

Liner Accessories by American Hearth

Stainless Steel Flex Liner & Parts



Clamp Hanger				
Supports liner assembly at termination or from base.				
Item No	Description		Retail	Stocked
RM8CH	8" Clamp Hanger		\$43.00	N
Star Clamps				
Centers liner and maintains air space when relining air cooled chimneys and supports pipe from above when using flat plate or tile cap.				
RM6ST	6" Star Clamp		\$33.00	N
Roof Brace				
For packed chimney installations. Stainless Steel, for 6", 7", 8" pipe. Includes band and struts.				
RMRB	Roof Brace Kit		\$123.00	N
Reducer/Increaser				
3-piece plug type, no crimp.				
RM5X6	5" x 6"		\$44.00	Y
ZF2ZRDI67	(ZFRDI76) 6" x 7"		115.00	Y
ZF2ZRDI68	(ZFRDI86) 6" x 8"		116.00	Y
Flat Plates				
With spin collar stiffener.				
RM51616FP	5" Flat Plate	16" x 16"	\$57.00	N
RM52424FP	5" Flat Plate	24" x 24"	100.00	N
RM61616FP	6" Flat Plate	16" x 16"	57.00	N
RM61620FP	6" Flat Plate	16" x 20"	59.00	N
RM62424FP	6" Flat Plate	24" x 24"	75.00	N
RM71620FP	7" Flat Plate	16" x 20"	59.00	N
RM81212FP	8" Flat Plate	12" x 12"	56.00	N
RM81616FP	8" Flat Plate	16" x 16"	57.00	N



Clamp Hanger



Star Clamp

Norwesco 90°
Adjustable Elbow

Reducer/Increaser

For same day shipping, place order by: 1pm (CO), 2pm (CA, WA) and 11am (MN, TX). Give us a call at 1-800-682-9722

Stock: Y = Stock, N or * = Non-Stock, LTSD = Limited to Stock on Hand

Non-Stock Item Notice: Items marked non-stock must be ordered in case quantities

Wood Liner & Components

Liner Accessories by American Hearth Stainless Steel Liner Caps & Accessories



Weatherband Caps

Features a special weatherband giving the venting system additional protection from wind and foreign elements. Adjusts for secure fit.

Item No.	Description	Retail	Stocked
RM3WB	3" Weatherband Cap	\$66.00	Y
RM4WB	4" Weatherband Cap	76.00	Y
RM5WB	5" Weatherband Cap	103.00	Y
RM6WB	6" Weatherband Cap	114.00	Y
RM7WB	7" Weatherband Cap	127.00	Y
RM8WB	8" Weatherband Cap	137.00	Y
RM10WB	10" Weatherband Cap	159.00	Y



Weatherband Cap

Weatherband Caps with Adapter for ICC

A one-piece constructed weatherband cap and pre-attached chimney adapter. This design makes for a more efficient installation on packed chimney. Designed to fit ICC Chimney or others with the same I.D. and O.D. dimensions.

RM6WBICC	6" Weatherband Cap with Adapter, 8" O.D.	\$145.00	Y
RM7WBICC	7" Weatherband Cap with Adapter, 9" O.D.	164.00	N
RM8WBICC	8" Weatherband Cap with Adapter, 10" O.D.	176.00	N
RM10WBICC	10" Weatherband Cap with Adapter, 12" O.D.	204.00	N



Weatherband Cap with Adapter for ICC

Wind Directional Caps

Provides the ultimate protection from the elements. Unique design naturally adjusts for wind variation, keeping vent exposure to a minimum. May require adapters for connecting Class A, pellet or B-Vent chimney.

RM5WD	5" Wind Directional Cap	\$131.00	Y
RM6WD	6" Wind Directional Cap	143.00	Y
RM7WD	7" Wind Directional Cap	143.00	N
RM8WD	8" Wind Directional Cap	153.00	Y
RM10WD	10" Wind Directional Cap	159.00	Y

Wind Directional Cap

Cap Adapters

Adapts any chimney into Reliance liner termination caps. Universal design fits all factory-built chimneys. Ideal for replacement caps. May be required to install specialty caps to existing class A or air cooled chimneys. Triple wall thermo types are available by special order only.

Item No.	Description	Outside Diameter	Retail	Stocked
RM6WDADAPT	6" Packed Adapter	8" O.D.	\$48.00	Y
RM6ADAPT6D	6" Adapter for 6" Duravent	10" O.D.	55.00	Y
RM7WDADAPT	7" Packed Adapter	9" O.D.	56.00	N
RM8WDADAPT	8" Packed Adapter	10" O.D.	60.00	Y
RM8ADAPT8D	8" Adapter for 8" Duravent	12" O.D.	61.00	Y
RM8ADAPT8UNI	8" Adapter	13" O.D.	61.00	Y
RM8ADAPTSLS300	8" Adapter for SL300	10-1/2" O.D.	107.00	N
RM10WDADAPT	10" Packed Adapter	13" O.D.	68.00	Y



Cap Adapter

For same day shipping, place order by: 1pm (CO), 2pm (CA, WA) and 11am (MN, TX). Give us a call at 1-800-682-9722

Stock: Y = Stock, N or * = Non-Stock, LTSD = Limited to Stock on Hand

Non-Stock Item Notice: Items marked non-stock must be ordered in case quantities

Wood Liner & Components

Dura-Blanket

Liner Insulation

High heat reflecting insulation for wrapping liner. Protects against heat penetration and contains heat within liner. A lightweight and resilient material. Excellent corrosion resistance and thermal stability. Low thermal conductivity and heat storage. Made of carborundum with increased fiber dimensions preventing airborne fibers. Carborundum Insulfrax Durablanket conforms to requirements for "Incombustible Materials" 1832°F continuous use limit.



Dura-Blanket

Item No.	Description	Retail	Stocked
WC1254	4 lb. Density 1" x 2' x 25' Blanket (long liner runs)	\$279.00	Y
WC12258	8 lb. Density 1/2" x 2' x 25' Blanket (short liner runs)	249.00	Y
WC12258CW	8 lb. Density 1/2" x 2' x 25' Blanket (foil faced)	399.00	Y
WC1258	8 lb. Density 1" x 2' x 25' Blanket (stove baffles)	449.00	Y
RM00TB	Insulation Tie Band (Set of 6) (RMITB)	22.00	Y
AT2150	Aluminum Tape 2"x150' -24/cs (AF973/975) #106616 (50 Yds)	26.90	Y

For same day shipping, place order by: 1pm (CO), 2pm (CA, WA) and 11am (MN, TX). Give us a call at 1-800-682-9722

Stock: Y = Stock, N or * = Non-Stock, LTSD = Limited to Stock on Hand

Non-Stock Item Notice: Items marked non-stock must be ordered in case quantities

Wood Liner & Components

Liner Accessories by American Hearth

Insert to Liner Adapters

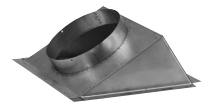


Connects wood inserts to stainless steel chimney liner systems. All liner adapters are available flat or offset. Round liner connections are available in rigid pipe size or flex size. Please reference the brochure at the end of this catalog section for specific measurements.

Universal Adapters

Universal style adapter fits over the round, square or rectangular discharge on insert without butterfly type damper. Fits most Fisher and Kodiak brand appliances.

Item No.	Description	Retail	Stocked
RM630UNI	6" x 30° Universal-12"	\$176.00	Y
RM630LGUNI	6" x 30° Universal Large-17"	182.00	Y
RM630XLGUNI	6" x 30° Universal X-Large-21"	182.00	Y
RM830UNI	8" x 30° Universal-12"	176.00	Y
RM830LGUNI	8" x 30° Universal Large-17"	182.00	Y
RM830XLGUNI	8" x 30° Universal X-Large-21"	182.00	N

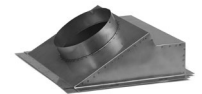


Universal Adapter

Slide Damper Adapters

Slide damper style fits rectangular, square or round discharge on insert with center slide type damper. Fits many Lopi brand appliances.

RM630LOPI	6" x 30° Slide Adapter	\$190.00	Y
RM830LOPI	8" x 30° Slide Adapter	190.00	Y



Set Back Adapter

Adjustable Flat Offset Adapters

Connects into round discharge on insert and can be adjusted in the field to suit a variety of applications. Designed for zero clearance insert connection to liners.

RM6ADJ	6" Adjustable Offset Adapter	\$191.00	Y
RM8ADJ	8" Adjustable Offset Adapter	231.00	Y



Slide Damper Adapter



Adjustable Flat Offset Adapter

For same day shipping, place order by: 1pm (CO), 2pm (CA, WA) and 11am (MN, TX). Give us a call at 1-800-682-9722

Stock: Y = Stock, N or * = Non-Stock, LTSD = Limited to Stock on Hand

Non-Stock Item Notice: Items marked non-stock must be ordered in case quantities

Wood Liner & Components

Liner Accessories by American Hearth

"Zero-Zero" Masonry Liner System


 AMERICAN
HEARTH PRODUCTS
Reliance Liner
Specifically Designed for Zero Clearance Applications

This premium liner application eliminates worries from questionable chimney construction or clearances and provides the ultimate assurance of a safe chimney. Recommended for unlined masonry chimneys or where clearances are of concern. Tested and listed to U.L. 1777 standards. Make sure your installation meets these tough "Zero-Zero" safety standards by using this fully listed system. The components below can be safely installed with zero clearance to the inner masonry and zero clearance to exterior combustibles despite a jagged or uneven chimney. Used only for zero clearance applications.

Termination Cap Options

The Zero-Zero application uses standard termination cap options, flex, liner and components for all items not listed on this page. Use oversize flat plate (listed on page 305) : for 6" system, use 7" flat plate; for 7" system, use 8" flat plate.

"Zero-Zero" Storm Collars

Adjustable shield that fits snugly onto the pipe redirecting the water away from the entire system. The band is wider in the Zero-Zero system in order to completely cover the air basket and insure protection of the overall system. For zero clearance applications.

Item No.	Description	Retail	Stocked
RM600SC	6" "Zero-Zero" Storm Collar	\$40.00	Y

**"Zero-Zero" Air Baskets**

Allows fresh cool air to facilitate draft around the pipe cooling entire system for added safety.

Item No.	Description	Retail	Stocked
RM00AB6	6" "Zero-Zero" Air Basket	\$67.00	N
RM00AB7	7" "Zero-Zero" Air Basket	67.00	N
RM00AB8	8" "Zero-Zero" Air Basket	67.00	N

Star Clamps

Provides additional insurance for supporting the liner in case of an overheating situation and centers the pipe inside the chimney.

RM6ST	6" Star Clamp	\$33.00	N
-------	---------------	---------	---

"Zero-Zero" Insulation and Attachment Options

WC12258CW	Foil Faced Ceramic Wool	\$399.99	Y
	2300° 2' x 25' roll, 1/2" thickness, priced per roll. See page 306 for more information		
RM00TB	Insulation Tie Band	22.00	Y
	For securing ceramic wool around liner, 6 pc.		
AT2150	Aluminum Tape	26.90	Y
	2" x 150' roll, used to secure ceramic wool around liner.		
	Mesh Sleeves Available - Contact Inside Sales (Mesh Sleeves are Non-Stock)		



Tie Bands

For same day shipping, place order by: 1pm (CO), 2pm (CA, WA) and 11am (MN, TX). Give us a call at 1-800-682-9722

Stock: Y = Stock, N or * = Non-Stock, LTSD = Limited to Stock on Hand

Non-Stock Item Notice: Items marked non-stock must be ordered in case quantities

Wood Liner & Components

M & G Dura-Vent

6" & 8" DuraLiner

DuraVent
Member of M&G Group

DuraLiner ensures safe and efficient venting of heating appliances, while protecting the masonry chimney from the damaging effects of flue gas. It is the only factory-insulated product with zero/zero clearance for high heat wood-burning appliances. No need to uncoil flex, insulate a majority of the pipe, or protect the insulation when installing. A smooth inner means less creosote buildup.

6" & 8" DuraLiner



For stock status, please visit orders.aes4home.com or call 800-682-9722

Item No.	Description	6"			8"		
		Pkg.	Weight	Retail	Pkg.	Weight	Retail
SD_DLR12	12" Round Rigid Pipe	1	4 lbs.	\$187.12	1	5 lbs.	\$312.13*
SD_DLR24	24" Round Rigid Pipe	1	6 lbs.	261.89	1	8 lbs.	310.36*
SD_DLRE30SS	30° Stainless Steel Elbow	1	2 lbs.	134.82	1	3 lbs.	227.60*
SD_DLR36	36" Round Rigid Pipe	1	9 lbs.	352.37	1	12 lbs.	520.20*
SD_DLRMTSC1	Masonry Thimble w/Slip Connector	1	4 lbs.	306.60	1	4 lbs.	459.91*
SD_DLRWPT	Wall Pass Through	1	15 lbs.	754.14*	1	16 lbs.	791.85*
SD_DLRE45SS	45° Stainless Steel Elbow	1	2 lbs.	134.82	1	3 lbs.	422.67*
SD_DLR48	48" Round Rigid Pipe	1	12 lbs.	436.45	1	16 lbs.	532.19*
SD_DLRAS	Adjustable Sleeve	1	2 lbs.	141.97*	1	3 lbs.	155.73*
SD_DLRT	Round Tee w/Round Branch w/Cap	1	5 lbs.	504.22	1	6 lbs.	1,014.40*
SD_DLRSCH	Slip Connector and Hanger	1 set	3 lbs.	147.14*	1 set	4 lbs.	205.03*
SD_DLRFCNR	Flat Stove Connector (round)	4	6 lbs.	128.20	4	7 lbs.	135.70*
SD_DLR CNR	30° Stove Connector (round-round)	4	9 lbs.	281.81	4	10 lbs.	304.50*
SD_DLRKXC13	Extend-a-Cap Kit (round 13" x 13")	1	7 lbs.	416.49	1	7 lbs.	715.27*
SD_DLRKXC18	Extend-a-Cap Kit (round 13" x 18")	1	7 lbs.	461.53	1	7 lbs.	516.15*
SD_DLR12O	12" Oval Rigid Pipe	1	3 lbs.	242.17	1	5 lbs.	487.70*
SD_DLR24O	24" Oval Rigid Pipe	1	7 lbs.	315.29	1	8 lbs.	877.86*
SD_DLR36F	36" Round-to-Round Flex Pipe	1	13 lbs.	330.81*	1	13 lbs.	430.05*
SD_DLR36OF	36" Oval-to-Oval Flex Pipe	1	13 lbs.	446.11*	1	15 lbs.	1,137.94*
SD_DLR36O	36" Oval Rigid Pipe	1	10 lbs.	417.07	1	12 lbs.	1,072.94*
SD_DLR36ORF	36" Oval-to-Round Flex Pipe	1	5 lbs.	330.80*	1	16 lbs.	812.82*
SD_DLR48O	48" Oval Rigid Pipe	1	13 lbs.	507.32	1	16 lbs.	619.68*
SD_DLR60F	60" Round-to-Round Flex Pipe	1	6 lbs.	463.13	1	22 lbs.	641.81*
SD_DLR60OF	60" Oval-to-Oval Flex Pipe	1	7 lbs.	463.13	1	15 lbs.	1,072.94
SD_DLR60ORF	60" Oval-to-Round Flex Pipe	1	17 lbs.	463.13	1	22 lbs.	1,072.94*
SD_DLROTRB	Oval Tee w/Round Branch w/Cap	1	2 lbs.	367.33	1	4 lbs.	728.29*
SD_DLRS	DuraLiner Spacer (oval)	4	3 lbs.	108.40*	4	4 lbs.	123.10*
SD_DLRFCNO	Flat Stove Connector (oval)	4	7 lbs.	363.76	4	6 lbs.	331.28*
SD_DLR CNO	30° Stove Connector (oval)	4	10 lbs.	271.77	4	10 lbs.	552.71*
SD_DLR CNRO	30° Stove Connector (round-oval)	4	7 lbs.	252.60	4	6 lbs.	363.76*
SD6DLRKXC22	Extend-a-Cap Kit (oval 10" x 22")	1	6 lbs.	458.66	-	-	-
SD6DLRKXC20	Extend-a-Cap Kit (oval 13" x 20")	1	8 lbs.	508.02	-	-	-
SD8DLIK	Two-Ply Insulation Sleeve (60")	-	-	-	1	12	238.56*
SD8DLRKXC22	Extend-a-Cap Kit (oval 10" x 22")	-	-	-	1	7 lbs.	522.08*
SD8DLRKXC20	Extend-a-Cap Kit (oval 13" x 20")	-	-	-	1	8 lbs.	725.36*

For same day shipping, place order by: 1pm (CO), 2pm (CA, WA) and 11am (MN, TX). Give us a call at 1-800-682-9722

Stock: Y = Stock, N or * = Non-Stock, LTSD = Limited to Stock on Hand

Non-Stock Item Notice: Items marked non-stock must be ordered in case quantities